

REDD+ : FPCD Work

Yati A. Bun

Foundation for People and Community
Development Inc. Papua New Guinea

*Presentation to: INAVIGES – REDD+, PES and
Benefit Sharing Workshop*

March Girls Resort Gaire Village,
Central Province.

17 February 2011

FPCD Core Business:

- On site training of Forest Resource Owners (FRO) to manage and develop their own forest resources and benefit fully from it. (targeting FROs)
- Manage PNGs forest resources to international Forest Stewardship Council (FSC) Standard (targeting forestry companies)

Context REDD (Reducing Emissions from Deforestation and Degradation)

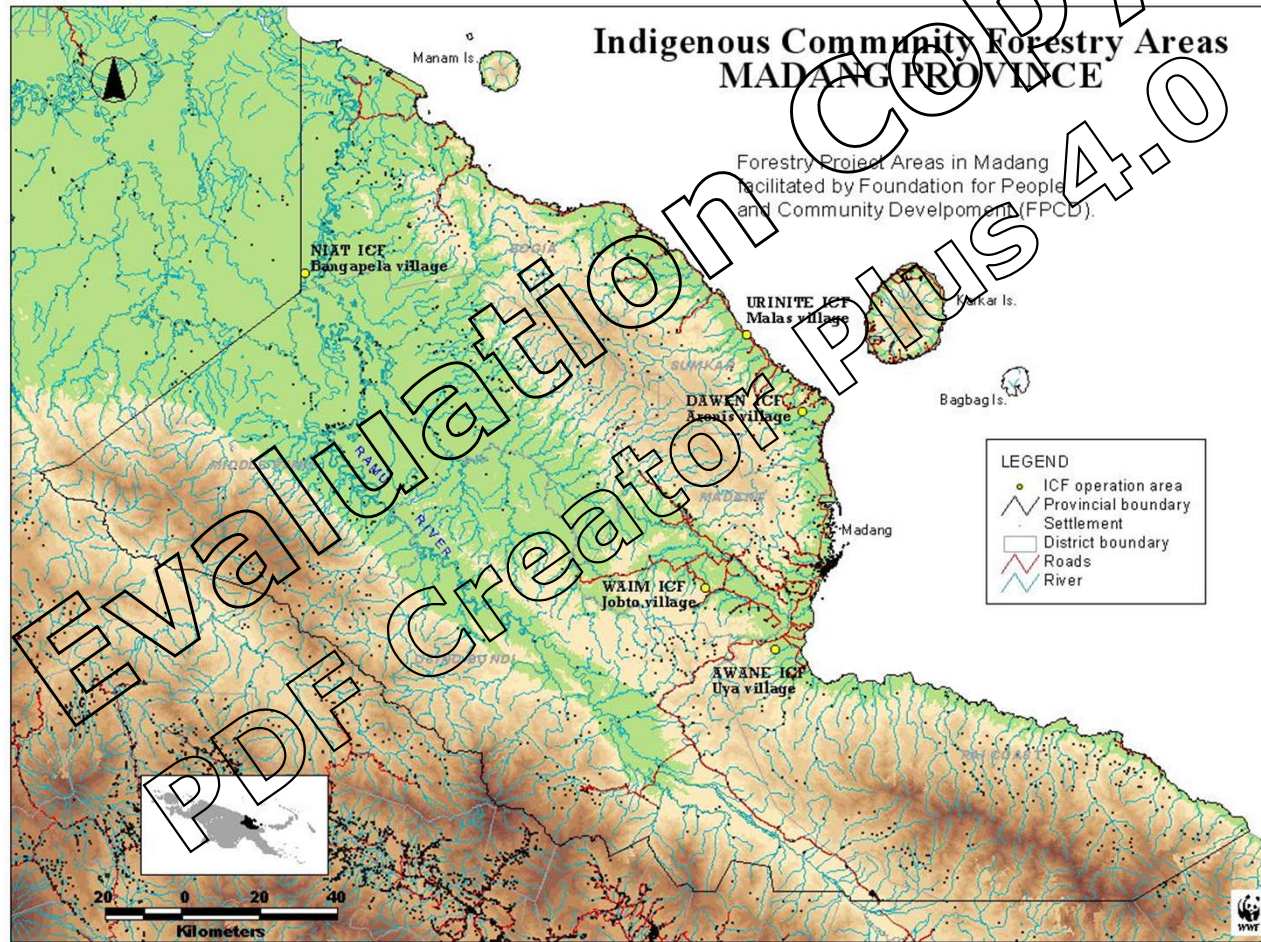
- Idea behind REDD: Countries that are willing and able to reduce emissions from deforestation should be financially compensated for doing so (Scholz & Schmidt 2008)
- REDD+ relates to conservation and enhancement of carbon stock. It also includes climate change, rural poverty, biodiversity conservation and sustaining vital ecosystems (Peskest 2008)
- REDD is about emissions reductions (Bali Action Plan)

Forestry and Climate change

- Forests regulate earth's climate through carbon cycle – storing and removing from atmosphere
- Cover 30% of earth surface yet containing some 77% of all carbon stored in vegetation and 33% of all carbon stored in soil
- Forests sequester and store more carbon per ha than other types of land cover
- To avoid worst effects of climate change - stabilize atmospheric CO₂ levels at 445-490 ppm
- Current CO₂ levels stand at 433ppm.
- Forest alone emits 30ppm
- Reducing emissions from forest can be achieved at a lower cost than other sources.

(Eliasch Review 2008)

Where we are located



REDD+ activities: Certified Community Forestry Programme

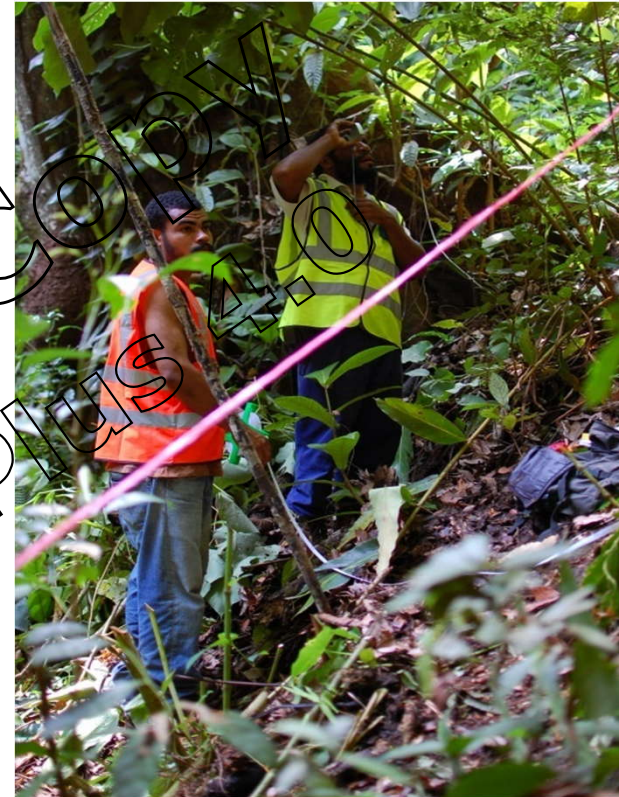
- Based upon proper and controlled use of portable sawmills
- Attained FSC Group Certificate in 2007
- 5 members (FRO Clan Groups) sign up to comply with our ICF Group Certificate and PNG FSC National Standards
- 8,500 hectares under SFM and Marketing FSC certified Timber (60M3 & K120,000 since 2007)
- Addressing three levels: FRO; FMU; District

3 levels

- **Forest Resource Owner level**
 - ILG
 - Capacity Building
 - Guidelines (Benefit sharing, Disputes' etc)
- **Forest Management Area Level**
 - PSPs (estimation and monitoring of forest carbon stocks)
 - CCF
 - Replanting etc
- **District Level**
 - Integrate land use plan
 - Satellite Mapping

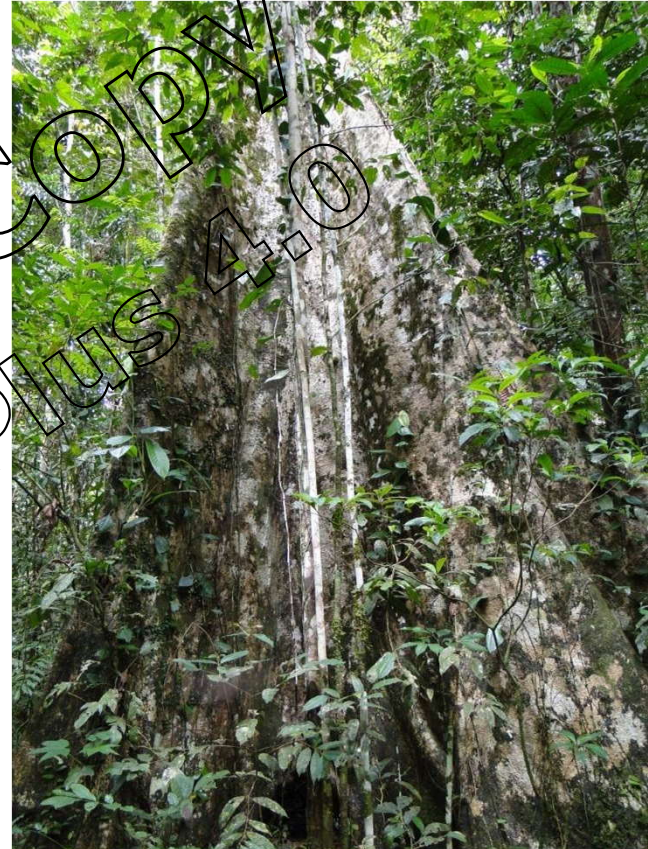
WHY

- Estimate carbon stock and monitor changes in FRO FMA and District Level
- Forest Res Owners
 - Building capacity for resource owners to be involved in REDD+ activities and dialogue
- Pilot Exercise
 - Feed into national scheme
 - Other FROs can learn from



Conclusion

- The foundation for forest management is clan based - build on it. Build on our strength (PNG ways) and remove foreign/colonial rules.
- Clans can do forestry to international standards; they can also contribute in various ways to REDD+ and be rewarded for their contribution.
- Many challenges at all levels (Government, FRO, Stakeholder, Scientific) as this is all new grounds.



Thank you



www.fpcd.org.pg