

Smallholder Support Services Expansion Project (SSSEP)

Presentation at Workshop on Impact of LNG on
PNG Economy-Particular Reference to the
Agriculture Sector

31 March-1 April, 2011

Ela Beach Hotel

Smallholder Support Services Expansion Project (SSSEP)

An Overview

Sam Lahis

Project Coordinator

Smallholder Support Services Expansion Project (SSSEP)

Outline of Presentation

Review of Smallholder Support Services Pilot Project (SSSPP)

- Achievements and outputs

- Overall Assessment

Need for SSSEP (Expansion)

Overview of SSSEP

- Objectives and Key Outcomes

- Funding Arrangements

- Implementation Approach

- SSSEP Strategies

- Achievements to date

Smallholder Support Services Pilot Project (SSSPP)

- **Project Objectives**
- to increase access of smallholder households to improved agricultural support services in the Eastern Highlands Province (EHP) and Morobe Province (MP).
- contribute to the overall goal of increasing agricultural production, productivity and income of smallholders, while ensuring the sustainability of their farming systems.
- to enhance the status of women in agriculture by focusing support services on food crop production (and thus provide income generating opportunities).

Smallholder Support Services Pilot Project (SSSPP)

- **Project Components**

- (i) support services contract facility established and operating;
- (ii) capacity of government staff and support service providers improved;
- (iii) project coordination established and operating.

Smallholder Support Services Pilot Project (SSSPP)

- **Achievements and outputs**
- The goal of the Project was to make a contribution to increasing agricultural production, productivity and income of smallholders.
- **This was clearly achieved as shown by the financial internal rates of return to households presented in the economic evaluation report.**
- An associated goal was enhancing the status of women in agriculture.
- **This was achieved through representation of women in the participatory rural appraisal and planning workshops,**
- **in the service provider data base where 77 percent of women service providers in the stakeholder survey achieved scores of more than 9 on a scale of 1-10.**

Smallholder Support Services Pilot Project (SSSPP)

- **Achievements and outputs**
- **The Project's objective, to increase access of smallholder households to agricultural support services in Eastern Highlands and Morobe Provinces, was also achieved, though not to the extent foreseen at appraisal.**
- All districts and LLGs participated but the number of households directly touched by the Project was 11,835 compared to 22,690 envisaged at Project design.
- This had no detrimental effect on the eventual Project EIRR.

Smallholder Support Services Expansion Project (SSSPP)

- **Achievements and outputs**
- **Evaluation report showed**
- **EIRR for the SSSPP approach was estimated at around 14 percent (ranging from 10-18 percent)**
- **compared favourably with the expected EIRR of 12 percent in the appraisal document.**

Smallholder Support Services Expansion Project (SSSPP)

- **SSSPP evaluations showed that**
 - SSSP concept is an economically viable model for support services provision, giving an EIRR of an estimated 14 percent
 - The Financial Internal Rate of Return (FIRR), i.e. the average returns to the farming household, for extension projects using the SSSP concept is estimated to be 31%
 - 80 percent of smallholders
 - preferred the contracting of extension services approach
 - preferred delivery of services from service providers
 - SP overall satisfaction with the SSSP concept was found to be 89 percent

Smallholder Support Services Pilot Project (SSSPP)

- **SSSPP evaluations showed that (contd.)**
- SPs provided smallholder support for
 - husbandry skills for twelve types of crops
 - husbandry skills for six types of livestock (including fish, bee-keeping)
 - bookkeeping and financial management skills
 - cooking skills and nutrition
 - downstream processing skills
- 80 percent of SPs were farmer experts, individual entrepreneurs or village-based CBOs
- 15 percent of SPs were women/ had women in the SP team

Smallholder Support Services Pilot Project (SSSPP)

Advantages of engaging service providers for support services' provision

- Provides opportunities for hands-on/ practical training
- Can bring to their training programs local knowledge relevant to prevailing agro-ecological conditions
- Takes account the socio-cultural characteristics of the group that SPs are contracted to train including knowledge of the local language
- Provides rural employment
- Makes good use of village based skills and experience
- Pool of expertise to meet farming communities' diverse requirements

Smallholder Support Services Pilot Project (SSSPP)

Advantages of engaging service providers for support services' provision (contd.)

- Can provide services in more isolated areas
- Builds up relationships between locally based entrepreneurs and smallholders for possible further engagement
- Provides flexibility, allowing SPs to manage their own affairs in between contracting obligations
- Devolves responsibility for monitoring of SP contracts to district/ LLG entities
- Offers R&D institutes linkage to farming community for info. exchange

Smallholder Support Services Pilot Project (SSSPP)

- **Achievements and outputs**
- **Social impacts were generally seen as positive with a 72.5 percent rating.**
- Provision of employment opportunities and household income generation were the major benefits.
- There were some concerns about environmental impacts resulting in a slightly lower score of about 70 percent.
- These concerns related mainly to soil erosion and improper use of agricultural chemicals.

Smallholder Support Services Pilot Project (SSSEP)

- **Achievements and outputs**
- **Sustainability of the concept in the two pilot provinces can be viewed from three different perspectives:**
 - **financial**
 - **institutional**
 - **management**
- From the financial point of view the Eastern Highlands Provincial authorities showed their commitment in the last year of the Project by increasing the amount in the 2008 budget allocated to the SSSPP extension concept
- With the positive political will already demonstrated in supporting the SSSPP concept, there is a good chance this support will continue for the duration of the current administration (to mid 2012).

Smallholder Support Services Expansion Project (SSSEP)

- **Achievements and outputs**
- Should be noted that sustainability of the SSSPP concept does not rely solely on DAL, whether at the national level or at the level of local administrations
- In the two pilot provinces, administrations and politicians have expressed support.
- CIC has successfully adopted the concept after a complete re-organization of its outreach/ extension division
- other commodity organizations have indicated their interest to take up the concept.

Smallholder Support Services Pilot Project (SSSEP)

- **Overall Assessment**
- **The Project can be rated highly successful**
- It developed and implemented a concept that has been widely acknowledged as a viable means to provide smallholders with an appropriate **form of support services**
- **should be continued and replicated**

Smallholder Support Services Expansion Project (SSSEP)

- **Need for the SSSEP**
- The Smallholder Support Services Pilot Project (SSSPP), designed to improve the delivery of support services to smallholders through a demand driven-contracting out process, was deemed a success
- but at closure in December 2007 certain critical activities were not completed:
- Further consolidation of the concept in the two pilot provinces (EHP, MP)
- Aligning itself to the 2007-launched National Agriculture Development Plan
- Strengthening the service provider associations
- ... and these were taken up by NZAID and built into a new project, SSSEP

Smallholder Support Services Expansion Project (SSSEP)

Objectives

1. To institutionalise SSSP concept into Eastern Highlands & Morobe Provincial government operational and funding structures
2. To harmonize NADP and SSSP procedures and guidelines for DAP/DEP formulation and funding
3. To expand SSSPP concepts and NADP policies to Simbu province and Central province
4. To strengthen service provider associations
5. To mainstream gender equality and women's empowerment into all project activities, with particular attention to women's empowerment as service providers and smallholder producers

Smallholder Support Services Expansion Project (SSSEP)

- **Funded by**
 - NZAID
 - National Government
 - Provincial Governments (4 participating provinces)
- **Participating provinces**
 - Eastern Highlands
 - Morobe
 - Simbu
 - Central
- **Duration:** February 2010 to July 2012
- **Project Offices**
 - Port Moresby
 - Goroka
 - Lae
 - Kundiawa

Smallholder Support Services Expansion Project (SSSEP)

Key Outputs

1. MIS installed in each of four provinces and PCU
2. SSCF process mainstreamed in each of four provinces
3. District Agricultural Plans (DAPs) and District Extension Programmes (DEPs) developed in selected districts (10 in total) in the 4 provinces
4. Prescribed SSCF management responsibilities devolved to selected districts (10 in total) in the four provinces
5. Harmonized framework of SSSP concept and NADP guidelines developed for formulation, management and funding of DAPs/ DEPs

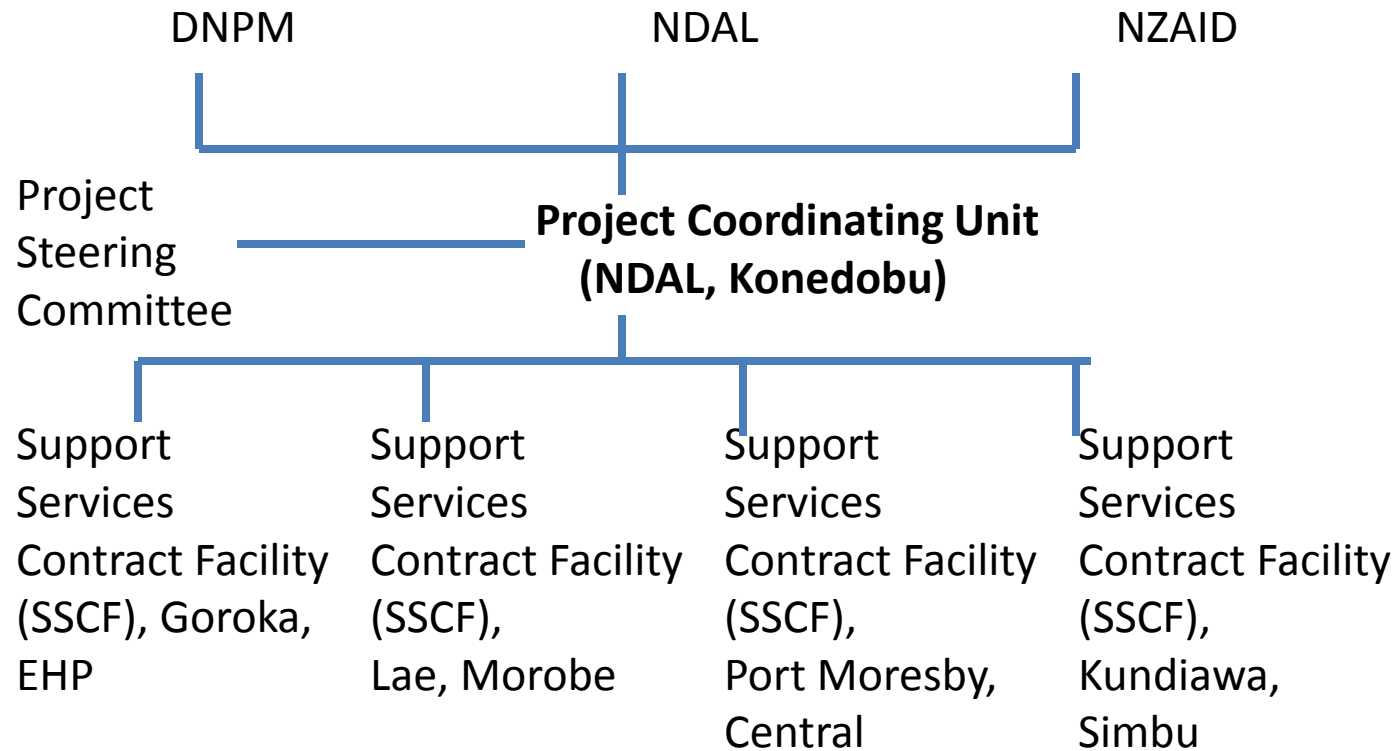
Smallholder Support Services Expansion Project (SSSEP)

Key Outputs (contd.)

6. Provincial service providers associations' constitutions standardized, association self-reliance promoted and links with training institutions developed
7. Gender assessment conducted to provide data to shape SSSEP gender policies and processes in order to mainstream women's participation
8. Lessons identified through monitoring and evaluation

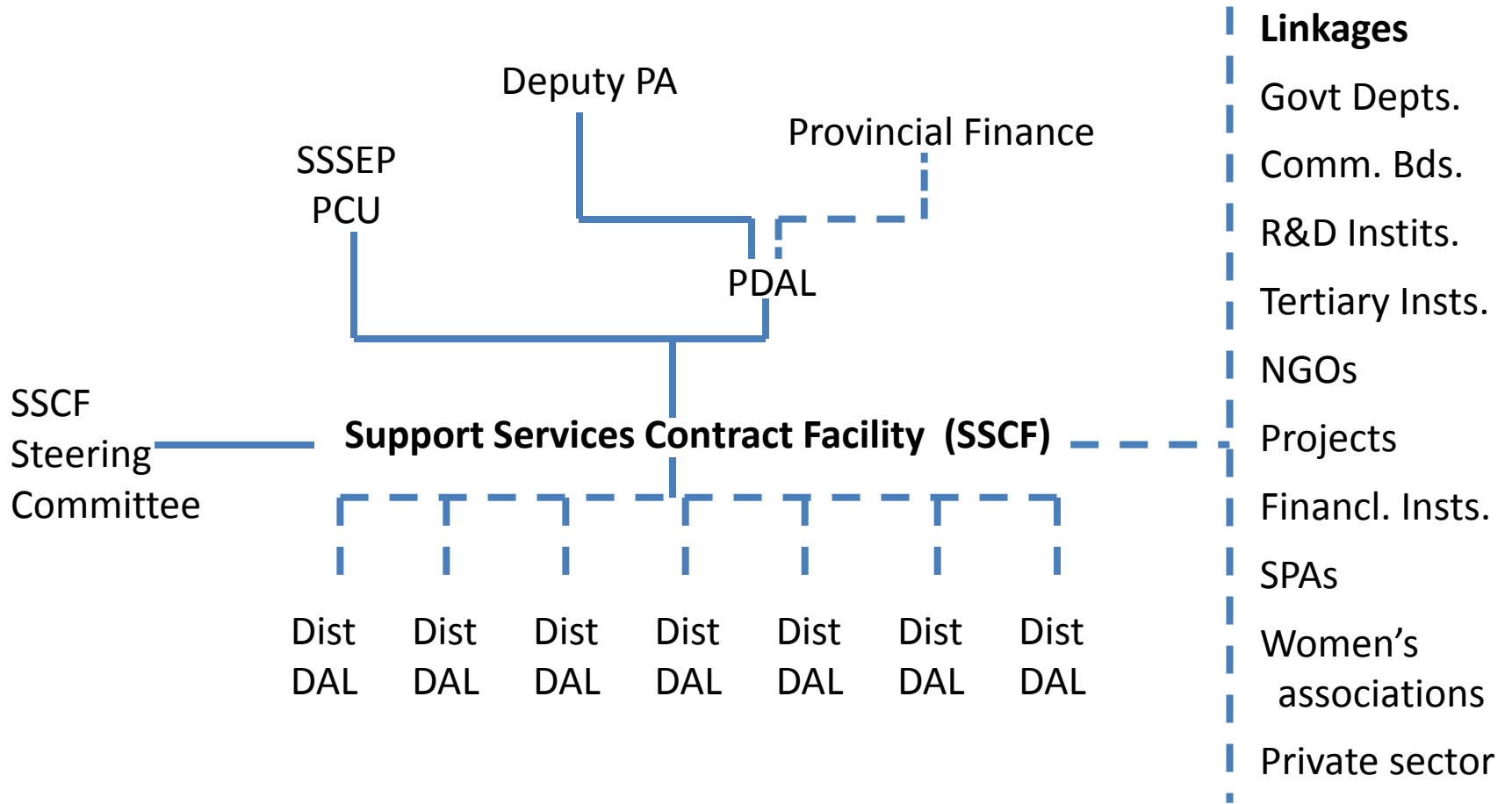
Smallholder Support Services Expansion Project (SSSEP)

SSSEP Management



Smallholder Support Services Expansion Project (SSSEP)

SSCF Management



Smallholder Support Services Expansion Project (SSSEP)

SSSEP Management

Project Steering Committee

NDAL Deputy Secretary, Chair

NDAL FAS. P&ISS

SSSEP Coordinator, Deputy Chair

Programme Advisors, DAL (part. provs.)

SSCF Managers, (participating provs.)

Senior Monitoring Officer, DNPM

A/S Gen. Econ. Policy, DF&T

SSSEP Consultants

(Others co-opted)

SSCF Steering Committee

Provincial Deputy Administrator, Chair

SSSEP Coordinator, Alternate Chair

Provincial DAL Prog. Advisor, Deputy Chair

SSCF Manager

Prov. Finance Manager

NDAL Regional Director

NGO Representative

SSSEP Advisor

SSSEP Deputy Advisor

Gender representative (Morobe prov.)

(Others co-opted)

Smallholder Support Services Expansion Project (SSSEP)

Funding arrangements (2.5 years)

Source	Subtotals (PGK)	TOTALS (PGK)
NDAL	1,133,000	
NDAL grants to provinces	1,000,000	
NADP dist. agric. grants	5,000,000	
Provincial contributions	2,250,000	9,383,000
NZAID	3,775,085	3,775,085
TOTALS		13,185.085

Smallholder Support Services Expansion Project (SSSEP)

Financial Arrangements

- PCU
 - Trust account NZAID funds
 - Trust account GOPNG funds

- SSCF
 - Trust account
 - NZAID funds
 - GOPNG Funds

Smallholder Support Services Expansion Project (SSSEP)

Reporting requirements

- | | |
|-------|--|
| GOPNG | <ul style="list-style-type: none">• Quarterly• Annual |
| NZAID | <ul style="list-style-type: none">• Inception• Progress (six-monthly)• Project Closing |

Smallholder Support Services Expansion Project (SSSEP)

SSSEP Consultants

Position	Name
Advisor	John Hunt
Deputy Advisor	Martin Raurela
SPA Advisor	Arilla Haro
Gender Specialist	Bernadette Haro
IT Specialist	James Josiah
M&E Specialist	Dr. John Duguman

Smallholder Support Services Expansion Project (SSSEP)

Implementation approach

- draws on
 - GOPNG policies and strategies
 - PNG Vision 2050
 - National Development Strategic Plan
 - Medium Term Development Strategy
 - National Agriculture Development Plan
 - NZAID policies and strategies
 - SSSPP experiences and policies

Smallholder Support Services Expansion Project (SSSEP)

PNG Vision 2050

- Institutions associated with service delivery
 - Provincial and Local Level Service Monitoring Authority (PLLSMA)
 - Service Delivery Mechanism Model (SDMM)
- Public-private community partnerships (PPCP)
- Development of human capital
- Development of agriculture sector through NADP

Smallholder Support Services Expansion Project (SSSEP)

- **National Development Strategic Plan**
- **Medium Term Development Strategy**
- Agencies' service delivery through districts and LLGs
- Collaboration with local authorities in identifying local needs
- Gender mainstreaming
- Monitoring and evaluation

Smallholder Support Services Expansion Project (SSSEP)

National Agriculture Development Plan

- Potential for the SSSP concept to be adopted by other arms of local government
- Gender mainstreaming
- Strategies for sectors
- Food and horticulture crops
- Tree and industrial crops
- livestock, apiculture and aquaculture
- spice and minor crops (including floriculture)

Smallholder Support Services Expansion Project (SSSEP)

NZAID

- Service delivery through
 - Government agencies, relevant institutions and service delivery partners (e.g. service providers)
 - Strengthening civil society
 - Accountability and effectiveness
- Gender mainstreaming
- Applying NZAID strategies through
 - Working with local governments to promote sustainability
 - Aligning SSSEP activities to other projects, programmes
 - Making full use of MIS to identify problems (accountability and others) and to share lessons learnt among stakeholders

Smallholder Support Services Expansion Project (SSSEP)

- **SSSEP Strategies**
- Based on the SSSP concept and experiences
- Demand driven
- Provinces wishing to participate in SSSP concept
- Districts wishing to participate in SSSEP activities
- Civil society wishing to benefit from SSCF support services
- Service provider delivered (performance based contracting out)
- Locally managed (by provincial and district officers)

Smallholder Support Services Expansion Project (SSSEP)

- **Current strengths on which SSSEP can build**
- Backing of participating provincial authorities
- Experience of Provincial and District DAL officers
- Experience and availability of service providers
- Demand from farming communities
- Continued use of Trust Accounts in EHP, Morobe, Simbu and Central
- SSCF Management Units

Smallholder Support Services Expansion Project (SSSEP)

- **Potential for SSSP concept**
- Wider application/ adaptation, e. g, WB PPAP, AIGF/S
 - to more provinces
 - to other rural development agencies
 - for addressing a broader range of farmer requests
 - for introducing new farming practices, management skills
- for DAPs/ DEPS to
 - strengthen civil society
 - develop realistic community based agriculture plans
- for women who have take up service provider opportunities under SSSEP to become local leaders
- for other agencies to adopt the MIS to improve
 - decision making
 - Coordination, reporting and accountability practices

Smallholder Support Services Expansion Project (SSSEP)

Achievements to date

- Grant Fund Agreement signed in February 2010
- PIAs signed with 3 provinces, Central in process
- PCU functioning
- EHP, Morobe, Simbu Central prov. SSCF units functioning
- Consultants' mobilisation completed
- Draft Project documents developed
 - Inception report
 - Logframe
 - Implementation schedule
 - M&E matrix
- Implementation strategies being developed from SSSPP policies and experiences

Smallholder Support Services Expansion Project (SSSEP)

*...em tasol... teng kiu tru
na tingim...
sapotim wok didiman...
em bun tru bilong ples!*